

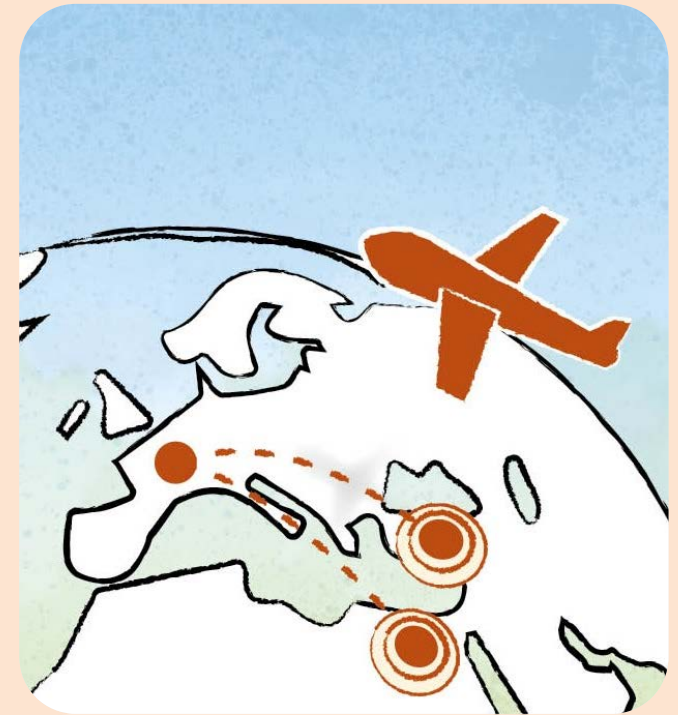


Resettlement, humanitarian admission programmes and private sponsorship in Germany

Janne Grote

German National Contact Point of the
European Migration Network (www.emn-germany.de)
&
Research Centre of the Federal Office for Migration and Refugees
(BAMF)

15.12.2016, Dublin

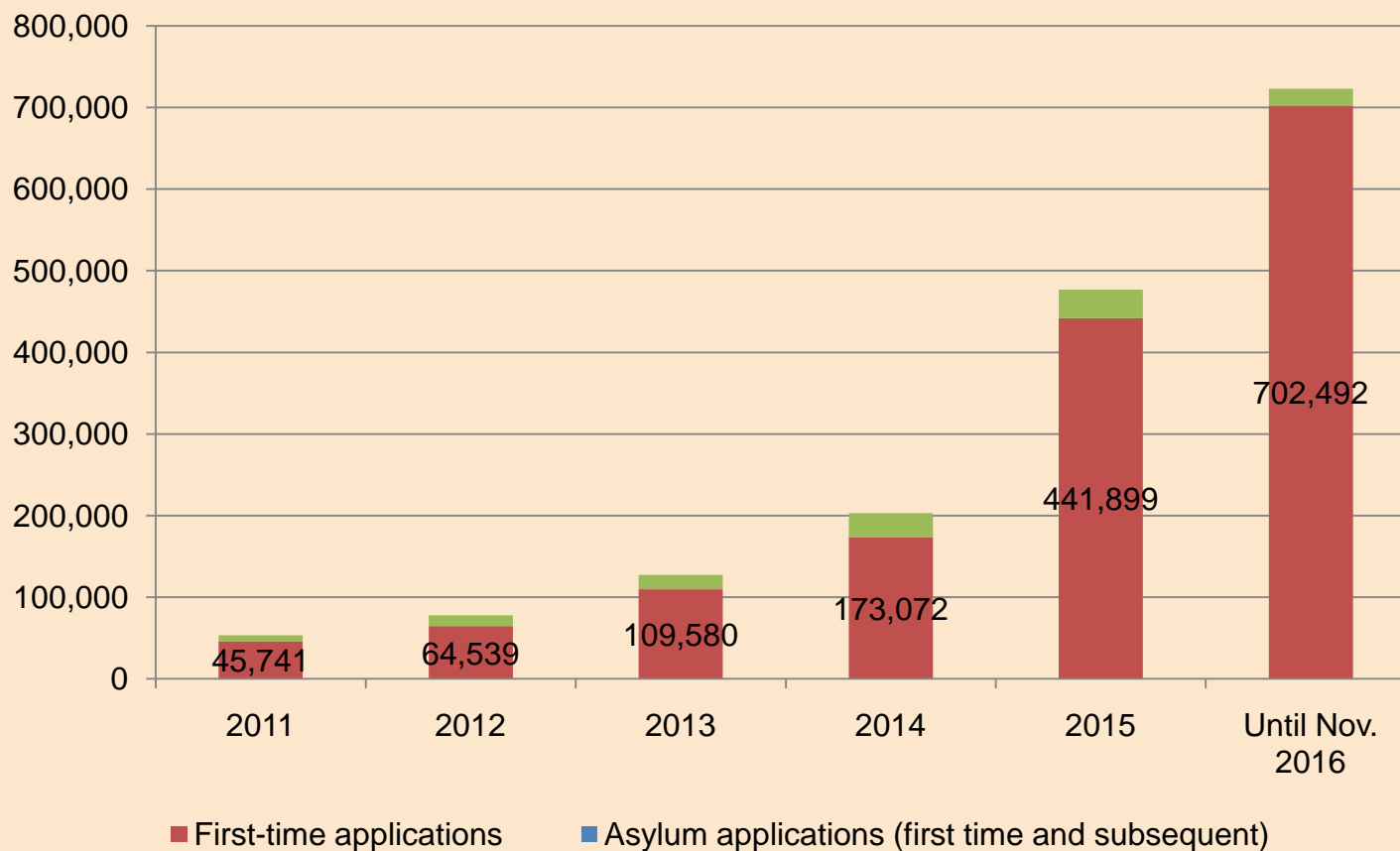


Four humanitarian admission programmes and schemes (2011-2016):

1. **Resettlement Programme** (permanent; since 2012),
2. **Humanitarian Admission Programmes** for beneficiaries of protection from Syria, its neighbouring countries, Egypt & Libya (quota based; 2013 -2014),
3. **Admission Procedure for Afghan Local Staff and their family members** (temporary, since 2012)
4. **Private Sponsorship Programmes** for Syrians implemented by various German federal Länder (temporary, since 2013).

Additionally: Relocation from Greece and Italy and Relocation from Turkey within the EU-Turkey-Agreement

Total number of asylum applicants (2011-2015)



Source: Federal Office for Migration and Refugees, Asylgeschäftsstatistik

Total number of persons admitted via admission procedures and private sponsorship (2011-2015)

Admission procedures	Persons admitted per year					
	2011	2012	2013	2014	2015	Total
Resettlement	-	307	293	321	481	1,402
HAP Syria	-	-	1,879	9,926	7,147	18,952
Admission Procedure for Afghan Local Staff	-	-	67	946	1,025	2,038
Private sponsorship programmes for Syrians	-	-	ni	ni	ni	21,500

Source: Federal Office for Migration and Refugees; ni = no yearly information

Outlook: Relocation from Greece and Italy (2016-2017: 27,500 persons) and Relocation/Resettlement from Turkey (2017: 13,700 / EU-Turkey-Agreement)

Resettlement Programme (since 2012)

- **Quota:** 2012 - 2014: 300; 2015: 500; 2016: 1,215 (until 30 November); 2017: approx. 800
- **UNHCR recognized refugee status is required;** Selection missions by the Federal Office for Migration and Refugees
- **Selection criteria:** preservation of (nuclear) family unity, family or other ties in Germany, the 'integration potential', degree of vulnerability
- **Residence title for three years**
- **Access to integration courses** and further support measures
- **First reception** centrally for 14 days

HAP Syria (temporary, quotas, 2013-2014)

- 1956 first humanitarian admission programme in Germany
- 3 humanitarian admission programmes for 20,000 beneficiaries of protection from Syria, its neighbouring countries, Egypt & Libya
- **UNHCR recognized refugee status** was partly required; dossier based selection by proposals
- **Selection criteria:** humanitarian reasons, family ties, contribution to the reconstruction of the country after the conflict has ended
- **Residence title** is issued usually for two years and includes a work permit from the very beginning

Admission Procedure for Afghan Local Staff (since 2012)

- Since 2012 common procedure for the admission of Afghan local staff:
“Each Afghan local staff member that is considered at risk due to his or her activities for the German agencies will be offered to be admitted.”
- Approval for admission **includes the staff member’s nuclear family**
- Until 4 May 2016 579 Afghan local staff members and 1,715 family members admitted (2,294)
- **Selection criteria:** The risk is assessed with a common list of criteria
- **Residence title** is issued usually for two years and includes a work permit from the very beginning

Private Sponsorship Programmes (since 2013)

- For **Syrian citizens or stateless persons from Syria**
- **No UNHCR status needed** and no international organizations involved
- **Target group:** Syrian citizens and stateless persons from Syria
- In most federal Länder a **family link was a prerequisite** (extended definition of family: first- and second-degree relatives); in some others third parties could also make a declaration of commitment
- More than one person may be sponsored at a time
- **Exclusion criteria:** criminal record, support of terrorist groups

Private Sponsorship Programmes

- **Residence permit** is usually issued for two years and includes a work permit from the very beginning; no claim to attend integration course
- Foreigners office need to verify the **financial standing of the sponsor**
- **Duration of liability** is limited to five years in general
- Several expenditures exempted from the declaration of commitment
- Declarations of commitment continue to apply **in case of an asylum application** and in case of **deportation**

Private Sponsorship Programmes

Example: Syrian parents joining their married daughter who is the single earner (2 children) in North-Rhine Westphalia

Attachment-exempted monthly income: €
1,879.99

+ subsistence minimum of a refugee as a spouse: €
318.00

+ subsistence minimum of a refugee as a spouse: €
318.00

Required minimum net income (if housing is provided): € **2,515.99**

Source: MIK NRW 2013: 7

Thank you for your attention

Contact

German National Contact Point of the
European Migration Network
Federal Office for Migration and Refugees
Research Centre on Migration, Integration and
Asylum
Frankenstraße 210
DE - 90461 Nürnberg

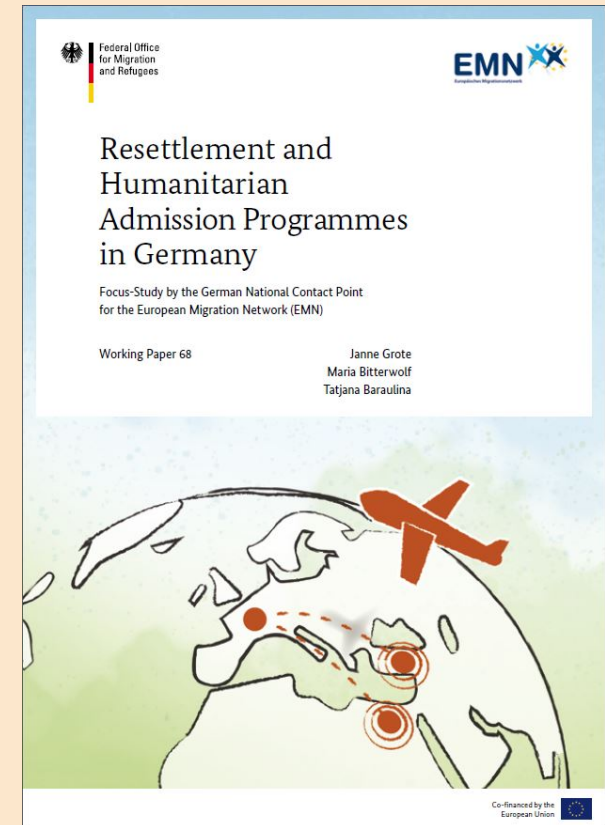
Janne Grote

Janne.Grote@bamf.bund.de

www.bamf.de

www.emn-germany.de

Tel. + 49 (0) 911 943 24653



Best practice

Resettlement, HAP Syria and the admission for Afghan local staff:

- Central first reception for 14 days
- Counseling and support during the first year after their arrival in their community

Private sponsorship programmes:

- Relieve of certain types of expenditure (e.g. medical costs)
- Limited liability in time (five years)

Challenges

Resettlement, HAP Syria and the admission for Afghan local staff:

- Provide decentralized housing in local communities
- Difficulties in counseling due to parallel existence of different admission procedures which come along with different residence titles, social rights and support measures

Private sponsorship programmes:

- Private bankruptcy or illiquidity of the sponsor
- Unpredictable costs (e.g. for medical treatment)

References and photo credit

National study:

Grote, Janne/ Bitterwolf, Maria/ Baraulina, Tatjana (2016): Resettlement and Humanitarian Admission Programmes in Germany. Focus Study by the German National Contact Point for the European Migration Network (EMN). Working Paper 68 of the Research Centre of the Federal Office for Migration and Refugees. Nuremberg: BAMF. **Download in German and English:** www.emn-germany.de

References:

MIK NRW – Ministerium für Inneres und Kommunales des Landes Nordrhein-Westfalen (2013): Erteilung von Aufenthaltserlaubnissen an syrische Flüchtlinge, die von ihren in Nordrhein-Westfalen lebenden Verwandten aufgenommen werden. Aufnahmeanordnung des Ministeriums für Inneres und Kommunales NRW (MIK NRW) sowie Anwendungshinweise, Elektronische Post an die Bezirksregierungen Arnsberg, Detmold, Düsseldorf, Köln und Münster vom 26.09.2013, Düsseldorf: Ministerium für Inneres und Kommunales des Landes Nordrhein-Westfalen.

Baraulina, Tatjana/ Bitterwolf, Maria (forthcoming): Resettlement: Aufnahme- und Integrationserfahrungen von besonders schutzbedürftigen Flüchtlingen. Ergebnisse einer qualitativen Befragung der im Jahr 2012 aufgenommenen Personen, Working Paper, Nürnberg: BAMF.

Photo credit:

Materna GmbH, Dortmund